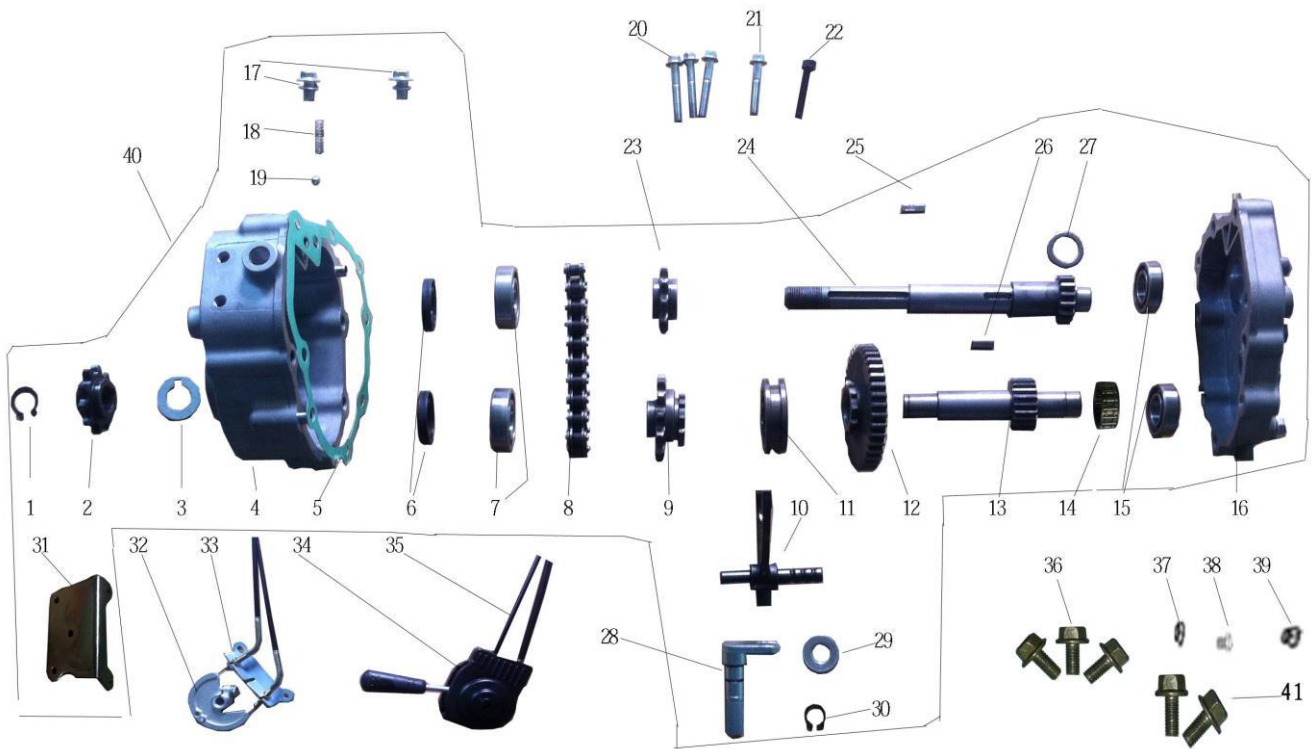




## **MID XRX/R**

### **Reverse System parts Manual**

**FIG.24 REVERSE SYSTEM PARTS**



NO.	PART NUMBER	DESCRIPTION	QTY.
1	89411600000003	Snap ring $\phi 16$	1
2	5400600080L000	10T driven sprocket	1
3	8020235080G000	Rear Clutch washer	1
4	1000001280G000	Reverse gear box left	1
5	1000001180G000	Left gasket	1
6	YF025035075000	Oil seal 20X35X7.5	2
7	6004Z000000000	Bearing 6004Z	2
8	420010Z080G000	Drive chain, 10T, 420	1
9	1000001480G000	Drive sprocket, 13T	1
10	1000001680G000	Shift fork	1
11	1000001780G000	Slide bushing	1
12	1000001980G000	Driven shaft	1
13	1000001880G000	Driven gear	1
14	K18221600000000	Needle bearing 18*22*16	1
15	6003000000000000	Bearing 6003	2
16	1000001380G000	Reverse gear box right	1
17	57870801212502	BOLT M8*12 w/ washer	2
18	1000002080G000	Fork spring	1
19	1000002180G000	Steel ball $\phi 6$	1
20	57870604012502	Bolt M6*40	3
21	57870604012502	Bolt M6*35	1
22	GB700603512503	Screw M6*35	1
23	1000001580G000	Drive sprocket, 10T	1

24	1000002280G000	Driving shaft	1	
25	1000002380G000	Key 5X5X16	1	
26	1000002480G000	Key 5X5X14	1	
27	1000002580G000	Spacer $\phi 18^* \phi 25^*2$	1	
28	1000002680G000	Gear shaft	1	
29	97000800000002	Washer $\phi 12$	1	
30	89411200000003	Snap ring $\phi 12$	1	
31	1000002780G000	Bracket	1	
32	4000200300G200	Turning wheel	1	
33	4000100300G200	Turning Wheel bracket	1	
34	4070000300G000	The shifter assembly, Reverse gear	1	
	4071000300G000		1	
35	<b>6013000080G000</b>	Reverse gear wire	2	
36	57890601210005	Bolt M6*12	3	
37	61770600010005	GB6177 NUT M6	2	
38	57870802012505	Hexagon flange bolts M8*20	1	
39	61870800012505	Self-locking nut M8	1	
40	1000001080G000	Reverse gearbox assy. (including bracket)	1	
41	57890601610005	Bolt M6*16	2	